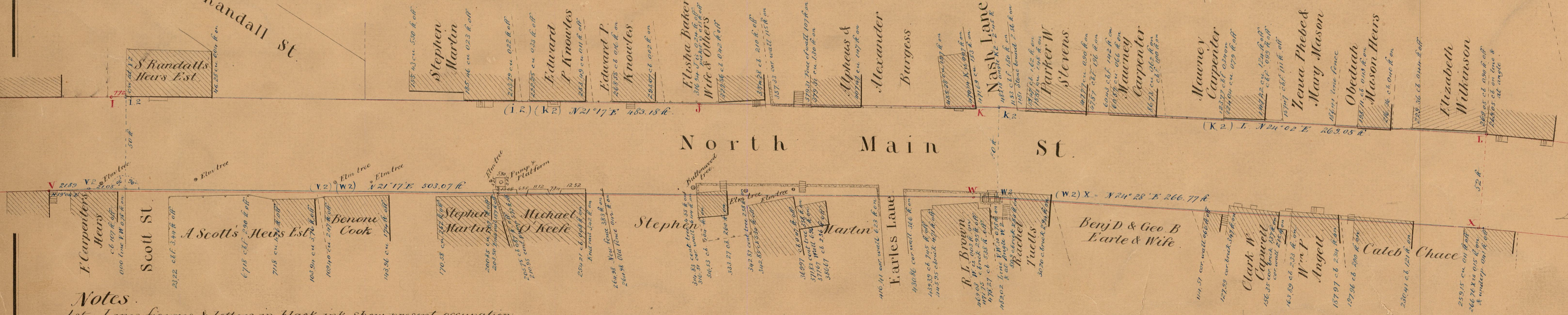




Lines of North Main St. Reported by the STREET COMMISSIONERS IN 1846.
The lines, figures &c in blue represent the lines reported - Scale 40 ft. to an inch.



62° 16'
(See P-43)
MAP
(of a part of)
NORTH MAIN STREET

Surveyed and drawn by order of
The Street Commissioners
by Wm. S. Haines
Nov. 1859

OFFICE No. 488
DRAWER " 62
SHEET " A-11

- Notes.**
- 1st. Lines, figures, & letters in black ink show present occupation.
 - 2nd. Buildings shaded purple are those referred to in the reports of 1785 & 1795 which are now standing.
 - 3rd. Lines, figures, & letters in red ink show the bounds of the street from Branch to Sexton Streets, as obtained from the reports thereof accepted in 1785 and 1795, combined with evidence of the former position of bounds referred to in said reports at the points E, I, J, V, & W, and combined with evidence of the line of the street as heretofore marked out near M, as more fully explained in my Report to the Street Commissioners of this date.
 - 4th. The blue lines B, C, D, E, H, I, & N, show where the lines of the street would come by following the courses and distances given in the report of 1785, without having regard to any other evidence of the former position of bounds referred to in said report; as explained in my report to the St. Com^{rs} of this date.

- 5th. The blue lines L, m, n, represent a change in the line of the street proposed by the committee in the report accepted in 1785.
 - 6th. The blue lines t, s, & sq, represent the line of the street occupied in 1784, as appears by a report and plat of a proposed change in the line of the St. now on file in the City Clerk's Office.
 - 7th. The blue line u, s, r, represents the proposed change referred to in the last note.
 - 8th. The distances given in the report of 1785, between each two of the following known points, agree in showing that the chain used in measuring them, was about $\frac{39}{100}$ of a foot longer for each 100 feet than the present U.S. Standard.
- Viz. E, P, F, G, H, & I, M.
Providence Dec 5th 1859.
Wm. S. Haines

Abbreviations
c b - stands for corner board
cu - cor. underpinning
c b f - board fence

Scale 60 feet to an inch
Measured by U.S. Standard

COMPARED
By J. A. Combe